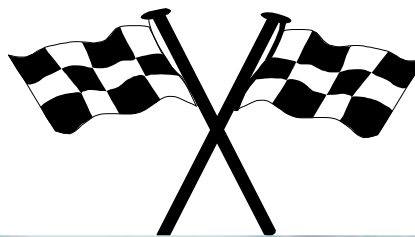




ADVANCED DESIGNS

**Quality Custom Leathers
For Track, Street or Snow**



2001 AHRA Top Fuel Champion **Steve Moore**

www.adleathers.com

**By Riders
For Riders**

DRAG SUITS

AD Pro 3

Our top of the line Pro Drag Suit

Shoulder, Elbow/Forearm Armor, Knee/Shin closed cell foam
Leather Shoulder, Elbow/Forearm, Knee/Shin, Spine, Hip and Seat Padding
Closed cell foam hip padding
Spandex® Panel
Kidney, crotch and elbow vents

STAGE II

Includes:

Basic suit
Leather shoulder, elbow/forearm, knee/shin & seat pads
Spandex® Panel
Kidney and crotch vents

STAGE I

Includes:

Basic suit
Leather shoulder, elbow, knee/shin, and seat pads
Spandex® Panel

Since this is a custom shop, you always have the option of designing your suit from scratch with any combination of options and padding. Designs, lettering, logos, and liners are additional.



Dirt Track Suits

Our Basic dirt track suit includes a two-piece suit with full waist zipper, 7" sleeve zippers and 12" leg zippers. Also included are leather elbow, knee/shin, and seat pads. Designs, lettering, logos and liners are additional.

STAGE III

Our ultimate "Pro Suit"

You don't have to be a pro, just want the max in protection and comfort.

Includes:

Leather shoulder, elbow/forearm, knee/shin, seat and spine pads

High density foam elbow, knee, chest, and biceps pads

Vented kidney, crotch and elbows

Spandex® Panel

STAGE II

For the more committed racer. Has more padding & options

Includes:

Basic suit

Leather shoulder, elbow, knee/shin and seat pads

High density foam elbow and knee pads

Vented kidney and crotch areas

Spandex® Panel

STAGE 1

An extra margin of protection over Basic.

Includes:

Basic suit

Leather shoulder, elbow, knee/shin & seat pad

Vented kidney area

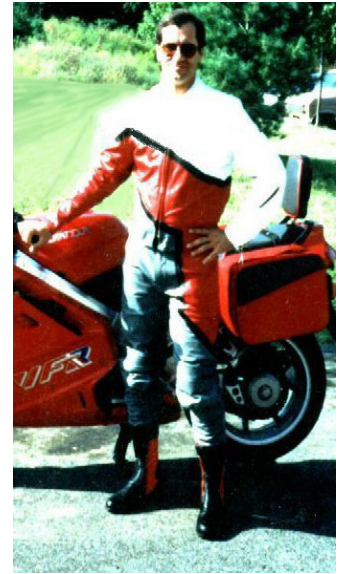
Spandex® Panel

Touring Suits

TourSport

Made with the same high quality materials as our race suits. Comes standard with smooth race back, two all leather zip pockets an inside waterproof pocket, mandarin collar and zippered sleeves.

TourSport pants feature double leather articulated knees, 12" leg zippers, and tapered legs for inside the boot fit.



Highway Suit

The highway suit includes the same great jacket features as the TourSport, but offers a straight-leg jean style pant that can be worn over the boot.

As always, your choice of custom options of padding, ventilation, pockets, and zip out liners is available.

Our zip in/out liners use Thinsulate® and feature full sleeve jackets. Pants can also be quilt lined to give you all-weather capability.



Snowmobile Suits

Our custom snowmobile apparel is tailored for the unique demands and conditions of the sport, and is available from the recreational trail rider to the Formula 1 racer.

Snowmobile jackets feature top grain 1.1-1.3mm leather and, as standard, knit cuffs, knit waistband and collar to fit comfortably and snugly to help keep out the snow. Jackets feature liners made from 3M Thinsulate® that keep you warm and still allow for freedom of movement. A waterproof inside pocket and D-rings for glove hooks add convenience and utility. As always, it is custom fit to your measurements.

Snowmobile bibs include as standard features: 12" brass leg zippers, Thinsulate® liner, a two-way front zipper, water repellant boot covers, fully adjustable bib straps with quick release buckles, and a patch pocket on the bib front.

A full array of options is available to suit your specific requirements including full-length leg zippers, zip in/out Thinsulate® liners, leather and foam padding, and pockets.

We can outfit you for recreation or competition, just let us know your application, and we will gladly help you in designing your suit.

Basic custom snowmobile jacket	\$650.00
Basic custom snowmobile bibs	\$625.00
Full-length leg zippers	\$ 85.00
Zip in/out Thinsulate® liner for jacket or bibs	\$ 85.00

Designs, lettering and logo work are additional. See price sheet for designs, options and prices. Custom designs always available, call for estimate.

CUSTOM DESIGNS ARE ALSO AVAILABLE

(Priced on Request)



J-1



J-2



J-3



J-4



J-5



P-1



P-2



P-3



P-4



P-5

ABOVE PANT AND JACKET DESIGNS USUALLY GO TOGETHER BUT ANY JACKET MAY BE COMBINED WITH ANY PANT ON THIS PAGE.



J-6



J-7



J-8



J-9



J-10



J-11
Front & Back



J-12
Front & Back



J-13
Front & Back



J-14
Front & Back



J-15
Front & Back



J-16



J-17

Any color combination can be used for designs.

PRICE SHEET

Effective January 1, 2016

DRAG RACE

DIRT TRACK

STREET/TOUR

Youth to 100# \$750.00

AD Pro 3 * \$1350.00

Stage 2 \$1150.00

Stage 1 \$1100.00

Drag/Street Combo \$1100.00

Drag or Dirt Track Jacket Only

Pants Only

Youth to 100#

Stage 1

Stage 2

Stage 3

\$600.00

\$500.00

\$750.00

\$1100.00

\$1200.00

\$1300.00

Classic Street \$525.00

Classic Deluxe \$595.00

w/zip out Thinsulate \$650.00

Leather Jeans \$400.00

Tour Pant \$480.00

Tour Suit \$1100.00

DESIGN PRICES

STYLE	PRICE	W/ACCENT STRIPES
-------	-------	------------------

J1	80.00	105.00
----	-------	--------

J2	100.00	120.00
----	--------	--------

J3	100.00	115.00
----	--------	--------

J4	125.00	Included
----	--------	----------

J5	135.00	Included
----	--------	----------

J6	40.00	60.00
----	-------	-------

J7	65.00	85.00
----	-------	-------

J8	35.00	45.00
----	-------	-------

J9 Front	35.00	45.00
----------	-------	-------

Front/Back	50.00	60.00
------------	-------	-------

J10 Front	45.00	55.00
-----------	-------	-------

Front/Back	60.00	75.00
------------	-------	-------

J11	95.00	120.00
-----	-------	--------

J12	75.00	90.00
-----	-------	-------

J13	115.00	Included
-----	--------	----------

J14	45.00	60.00
-----	-------	-------

J15	125.00	150.00
-----	--------	--------

J16	95.00	120.00
-----	-------	--------

J17	65.00	85.00
-----	-------	-------

P1	90.00	110.00
----	-------	--------

P2	100.00	125.00
----	--------	--------

P3	65.00	90.00
----	-------	-------

P4	90.00	Included
----	-------	----------

P5	90.00	Included
----	-------	----------

*ORIGINAL DESIGNS & ARTWORK PRICED ON REQUEST

LETTERS & NUMBERS

	1 COLOR	2 COLOR
--	---------	---------

1"-3" Block Letters	5.00	9.00
---------------------	------	------

Script Letters	6.00	10.00
----------------	------	-------

6"-8" Numbers	8.00	14.00
---------------	------	-------

Blocks (each)	3.00	5.50
---------------	------	------

Stars/Diamonds to 4"	5.00	9.00
----------------------	------	------

Special Fonts Priced On Request

Patches (Covered with clear plastic)	4.00	
--------------------------------------	------	--

OPTIONS

Jacket Liner	40.00
--------------	-------

Pant Liner	40.00
------------	-------

Mandarin Collar	25.00
-----------------	-------

Zipper Vents (pair)	20.00
---------------------	-------

Velcro # Square	30.00
-----------------	-------

Leather Zip Pockets (each)	20.00
----------------------------	-------

Perforation Vents

Chest	30.00
-------	-------

Kidney	15.00
--------	-------

Crotch	15.00
--------	-------

Elbow	10.00
-------	-------

Thigh	20.00
-------	-------

Extended waist	35.00
----------------	-------

PADDING

	Leather	Foam
--	---------	------

Shoulder	15.00	15.00
----------	-------	-------

Elbow	15.00	15.00
-------	-------	-------

Elbow/Forearm	20.00	20.00
---------------	-------	-------

Hip	15.00	15.00
-----	-------	-------

Knee	15.00	15.00
------	-------	-------

Knee/Shin	20.00	20.00
-----------	-------	-------

Seat	20.00	N/A
------	-------	-----

Back	25.00	25.00
------	-------	-------

Chest	N/A	25.00
-------	-----	-------

Biceps	15.00	15.00
--------	-------	-------

* Pads are priced per pair where applicable

* Foam pads *must* be combined with leather

OVERSIZE CHARGES

CHEST		WAIST	
-------	--	-------	--

Over 44"	30.00	Over 37"	30.00
----------	-------	----------	-------

45"	35.00	38"	35.00
-----	-------	-----	-------

47"	40.00	40"	40.00
-----	-------	-----	-------

49"	45.00	42"	45.00
-----	-------	-----	-------

51"	50.00	44"	50.00
-----	-------	-----	-------

53"	55.00	46"	55.00
-----	-------	-----	-------

Over 55"	Ask	48"	Ask
----------	-----	-----	-----

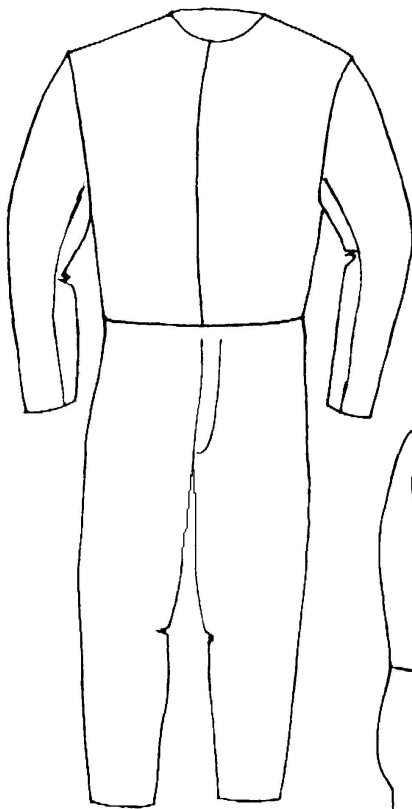
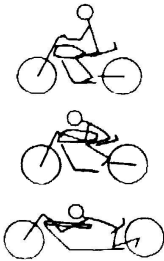
Xtall (over 6'3") Add 35.00

***Liner included**

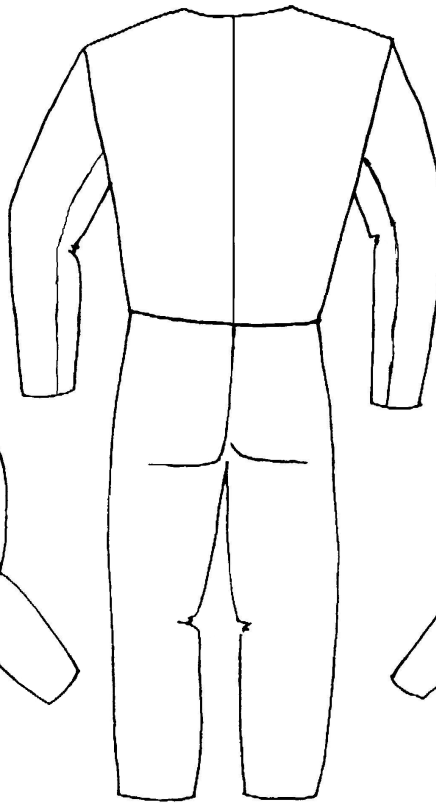
ASK ABOUT OUR LEATHER CARE PRODUCTS

**Use the drawings below to locate
letters, numbers, designs, etc.
and indicate colors.**

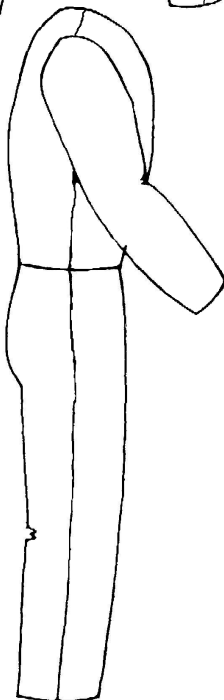
**CIRCLE DRAWING
CLOSEST TO RIDING
POSITION**



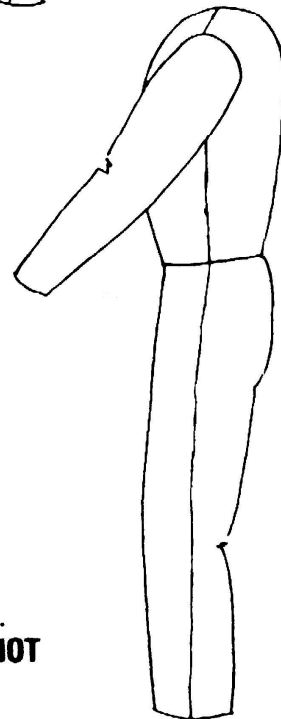
FRONT



BACK



RIGHT



LEFT

You can have a
color break at
any regular
seam at **NO
EXTRA CHARGE***

* All regular seams
are shown for a 2 pc.
suit. 1 pc. suits **DO NOT**
have a break at the
waist.